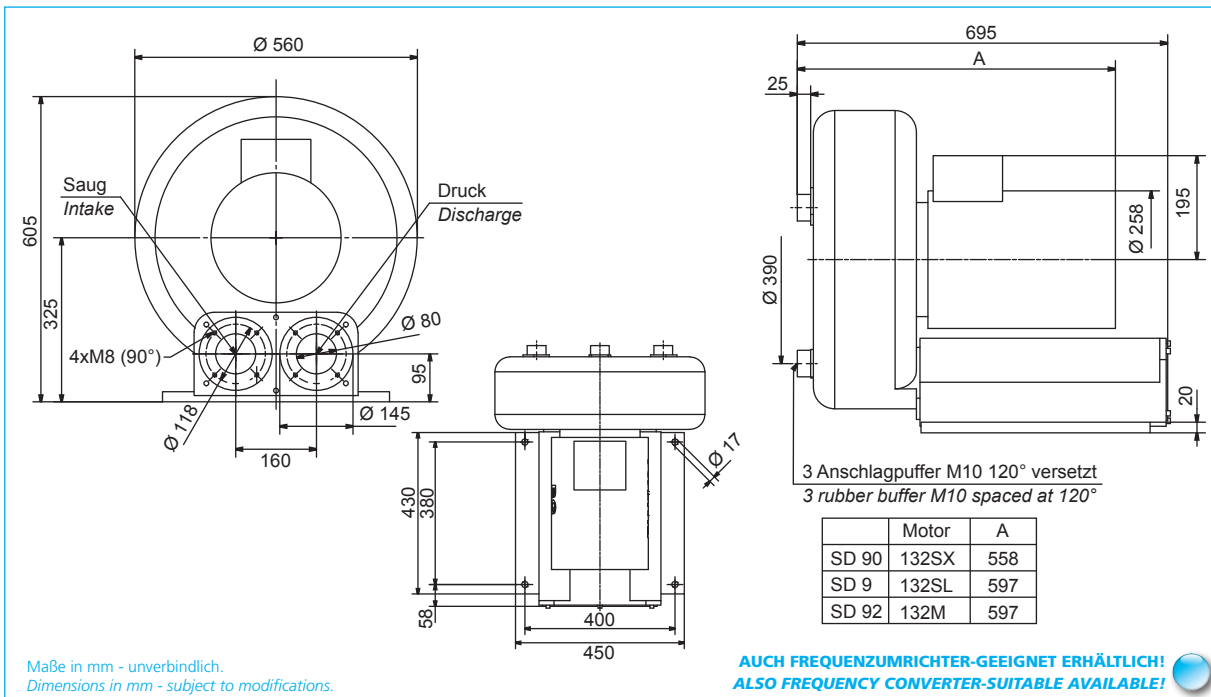
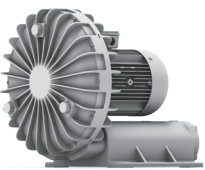
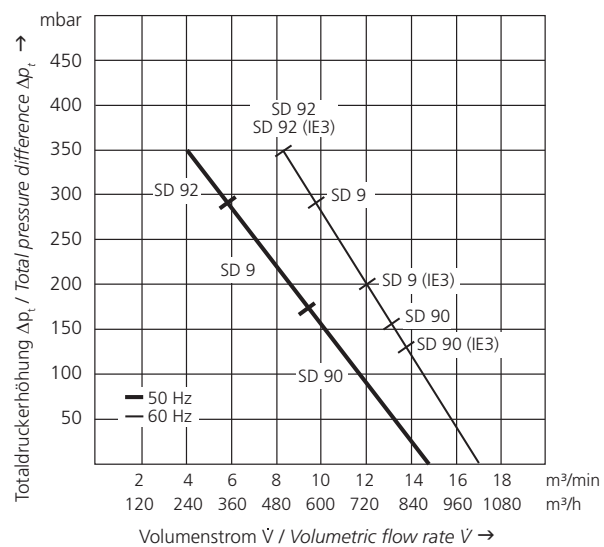


SD 90 SD 9 SD 92

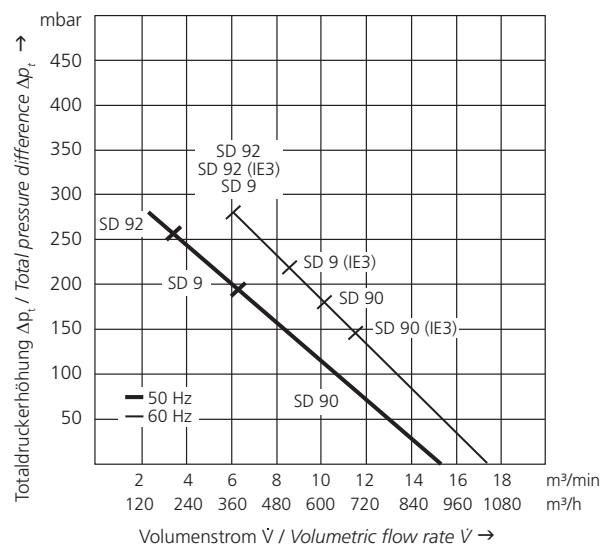


Typ Type	Effizienzklasse Efficiency class	Frequenz Frequency	Grenzwerte der Drosselkurve Überdruck Maximum performance when used as blower		Grenzwerte der Drosselkurve Unterdruck Maximum performance when used as extractor		Nennwerte des Motors Motor ratings				Schalldruckpegel Sound pressure level	Gewicht (ca.) Weight (approx.)
			\dot{V} max. \dot{V} max.	Δp_t max. Δp_t max.	\dot{V} max. \dot{V} max.	Δp_t max. Δp_t max.	Leistung Rated output	Spannung Voltage	Strom Current	Drehzahl RPM		
		Hz	m ³ /min	mbar	m ³ /min	mbar	kW	V	A	min ⁻¹	dB (A)	kg
SD 90	-	50	14,2	170	14,2	190	5,9	360-440 Δ	12,0-11,3	2925	70	104
	-	60	17,0	160	17,0	180	7,6	440-520 Δ	12,8-11,9	3515	76	104
	IE3	60	17,0	130	17,0	140	6,6	480 Δ	10,3	3540	76	104
SD 9	-	50	14,2	285	14,2	260	8,0	360-440 Δ	18,2-16,9	2890	70	107
	-	60	17,0	280	17,0	280	11,5	440-520 Δ	17,5-16,5	3490	76	107
	IE3	60	17,0	200	17,0	230	9,0	480 Δ	13,4	3530	76	107
SD 92	-	50	14,2	350	14,2	280	9,0	360-440 Δ	19,0-18,4	2930	70	110
	-	60	17,0	350	17,0	280	13,2	440-520 Δ	21,4-20,1	3525	76	110
	IE3	60	17,0	350	17,0	280	13,2	480 Δ	19,5	3525	76	110

Überdruck / Pressure



Unterdruck / Vacuum



Technische und konstruktive Änderungen vorbehalten.
Technical and constructional subject to change.